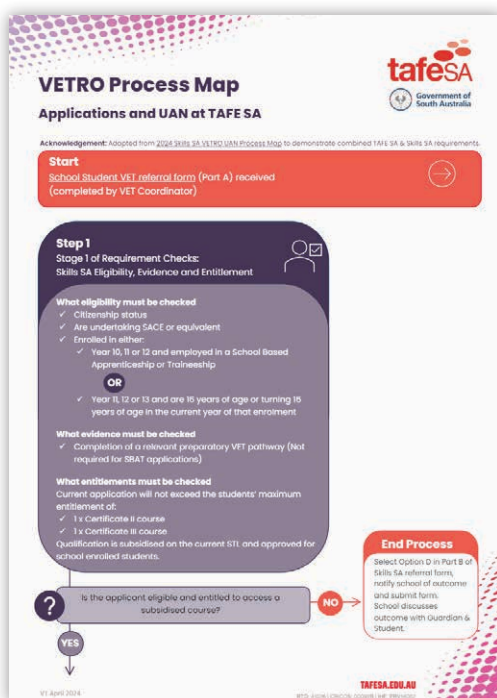


FLEXIBLE INDUSTRY PROGRAM QUALIFICATIONS PROCESS 2025 INTAKE KEY DATES



BEFORE YOU START

Skills SA updated requirements for Vet for Secondary Schools Referral applications in January this year. Please refer to [TAFE SA's VETRO process map](#) that incorporates these changes for how Part A, B, and C are processed, and Language, Literacy and Numeracy (LLN) Assessment results are used to determine suitability and support needs. This will help you be aware of what is necessary for a successfully completed Vet for Secondary Schools Referral application and give your students the best opportunity to receive an offer.



For additional information and resources regarding the Vet for Secondary Schools Referral process please refer to [TAFE SA's VET for Secondary Schools website](#).



PART A - VET REFERRAL APPLICATIONS OPEN MONDAY 29 JULY

TERM 3 WEEK 2

- Complete the [VETRO Part A referral form](#)* to commence the referral process. Remember to upload the following essential documentation in the referral form:
 - A completed [TAFE SA Registration and Consent form](#) and;
 - Approved evidence as per the [Skills SA Guide](#)

Available on the TAFE SA website are examples of completed:

- [VETRO Part A Referral Form](#)
- [TAFE SA Registration and Consent form](#)

*Please note that the form is dated 2023 but this is the current form Skills SA require to be submitted



SCHOOL NOMINATIONS FOR LLN INVIGILATION

MONDAY 29 JULY

TERM 3 WEEK 2

Information regarding LLN invigilation guidelines and schools staff nominations will be available on the [TAFE SA VET For Secondary Schools website](#) from 29 July. It is recommended that schools submit their staff nominations by 30 August to allow time for further communication and additional information prior to LLN Assessment sessions commencing on 23 September.



LLN ASSESSMENTS

MONDAY 23 SEPTEMBER TO FRIDAY 15 NOVEMBER

TERM 3 WEEK 10 TO TERM 4 WEEK 6

New hybrid LLN Assessment with streamlined Snapshot Reading and Numeracy Indicator (SRNI) and Core Skill Profile for Adults (CSPA) modules.

More information regarding the Skills SA changes to LLN Assessment outcomes and student suitability for VET studies can be found in the [TAFE SA VETRO Process Map](#).

Please note: Students with LLN minor gaps, and/or with additional support needs identified in their referral will require a Support Plan Agreement prior to an offer being considered:

- > [Support Plan Agreement Template](#)
 - > [Fact Sheet - Foundation Skills in Training Packages](#)
-



PART B - OFFERS COMMENCE

MONDAY 30 SEPTEMBER

TERM 3 WEEK 5

Essential requirements for a student to be considered for an offer:

- > Successfully lodged Part A referral form via the Skills SA Portal
- > Eligibility, Entitlement and Evidence received and verified
- > Successfully completed TAFE SA Registration and Consent form
- > LLN Assessment result of No Gaps or Minor Gaps
- > Support Plan Agreements submitted for students with LLN Minor Gaps and/or additional support needs identified in their Part A referral

Offers are subject to availability and applications will be allocated by the date noted on the Part A referral.



PART C - AGREEMENT DECLARATION

MONDAY 30 SEPTEMBER TO FRIDAY 22 NOVEMBER

TERM 3 WEEK 5 TO TERM 4 WEEK 6

Part C must be completed for a student to be enrolled into a TAFE SA Course and receive onboarding information.

Important Information:

- > To support parents/guardians with barriers to completing Part C (English as a Different Language, no email address, limited access to technology) Skills SA has allowed for school representatives to accept a Part C on a parent/guardian's behalf
- > If the Part C has not been completed within 14 days of being issued, the place held for the student is no longer guaranteed
- > If the course quota is reached beyond the 14 day completion period or the closing date has passed, the offer becomes void



VET REFERRALS CLOSE

FRIDAY 1 NOVEMBER*

TERM 4 WEEK 4

Vet for Secondary Schools Referral Part A applications **must be successfully completed and submitted by 5:00pm Friday 1 November**. Submissions must include:

- > Eligibility, Entitlement and Evidence received and verified
- > Successfully completed TAFE SA Registration and Consent form
- > LLN Assessment result of No Gaps or Minor Gaps
- > Support Plan Agreements submitted for students with LLN Minor Gaps and/or additional support needs identified in their Part A referral

Please Note: A black out period will apply from 5:01pm Friday 1 November until Sunday 12 January 2025. TAFE SA will commence reviewing applications for courses with availability from 13 January 2025.

*An additional two week period has been allowed for students to complete the LLN Assessment after referrals close. Last date for LLN Assessments to be complete is Friday 15 November.



REFERRAL OUTCOMES, ENROLMENT AND ONBOARDING INFORMATION

FRIDAY 8 NOVEMBER TO FRIDAY 29 NOVEMBER

TERM 4 WEEK 4 TO TERM 4 WEEK 7

For onboarding information to be sent, a Part C must be submitted. Friday 29 November is the last day for TAFE SA to send the required onboarding information student need before commencing their summer break.

For students unable to receive an offer into a course this will be communicated during this time period.



EXCEPTIONAL CIRCUMSTANCES

SATURDAY 2 NOVEMBER 2023 - FRIDAY 24 JANUARY 2025

TERM 4 WEEK 4 TO LAST WEEK OF SCHOOL HOLIDAYS

Applications will be considered under exceptional circumstances for students who are new enrolments to your school.

Students currently enrolled at your school must have a Vet referral application submitted by 5:00pm Friday 1 November as TAFE SA requires referral numbers to manage class sizes and determine if courses are viable to go ahead.



COURSE COMMENCEMENT

FRIDAY 31 JANUARY

TERM 1 WEEK 1

The earliest classes will commence for Semester 1, 2025 is Friday 31 January.

Most classes will start in Week 2 of Term 1. The last day for a student to commence in class is subject to qualification requirements and will be advised later this year.

The maximum duration for the last day to start is 2 weeks from the date of the first class for that course.

